

Mini Dome ready to install

# DA350PAP<sub>b</sub>



Focal length 2.8 mm

94°

Up to  
4 meters\*

  
**Identification**

Up to  
7.5 meters\*

  
**Lecture de plaques**

Up to  
9.2 meters\*

  
**Reconnaissance**

\*Daytime distances

Focal length 8 mm

48°

Up to  
12 meters\*

  
**Identification**

Up to  
20 meters\*

  
**Lecture de plaques**

Up to  
25 meters\*

  
**Reconnaissance**

\*Daytime distances

# Data sheet

<b>Sensor</b>	1/2.9" CMOS
<b>Resolution</b>	1920 x 1080 pixels - 30 IPS
<b>Focal lenght</b>	Total motorization 2.8 mm to 8 mm
<b>Angle</b>	94° to 48°
<b>Sensitivity range</b>	0,01 Lux (Color), 0 Lux with IR
<b>Infrared range by night</b>	20 meters
<b>Intelligence **</b>	People detection, perimeter, single or double line crossing, added or missing object, abnormal speed, illegal parking, bad signal, motion detection, network disconnection
<b>Images *</b>	3D DNR, WDR, ICR, HLC, ROI, DIS, Fog lamps, Corridor mode
<b>Video compression</b>	H.264, H.265, MJPEG
<b>Video flow</b>	100kbps à 12Mbps
<b>Protocols</b>	IPv4/IPv6, 802.1x, HTTP, HTTPS, TCP/IP, UDP/IP, DHCP, NTP, RTCP/RTP, PPPoE, SMTP, DNS, UPnP, FTP, ARP, SNMP, Vizeo
<b>Compatibility</b>	RTSP - ONVIF

<b>Positioning</b>	2 Axis
<b>Specificity</b>	Easy to assemble
<b>Alarme</b>	N/A
<b>Audio</b>	Built-in microphone
<b>Motorization</b>	Motorization 350° H 0 à 90°V
<b>Power supply and consumption</b>	12V DC, PoE et 8 W Max.
<b>Dimensions and weight</b>	ø 105 x 73 mm et 450 g
<b>Operating temperature</b>	-40° to 60°c with 90% non-condensing humidity
<b>Protection sign *</b>	IP66, IK10
<b>Guarantee</b>	3 years

## Recommended accessory



**SP350PAP**  
Wall support



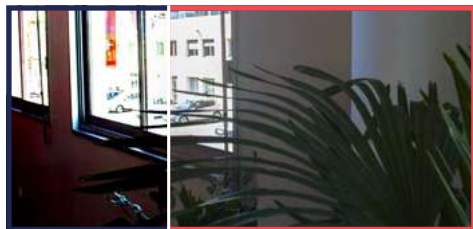
**SP50HD**  
Junction box

Technical glossary

# Camera performance

without

with



## WDR

Avoid backlighting and loss of detail in shadow areas.



## ICR

Mechanical filter that allows, during the day, a faithful reproduction of the colorimetry of the filmed images.



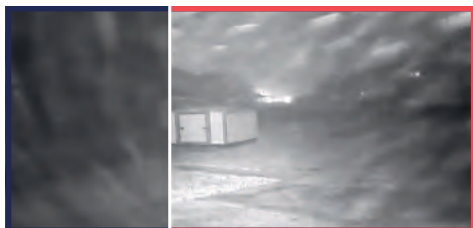
## 3D DNR

Noise reduction (spurious color dots) in dark areas for better image quality.



## HLC

Reduces bright lights and backlighting to avoid camera glare.



## Anti-fog

Better visibility in bad weather: fog, snow, rain...



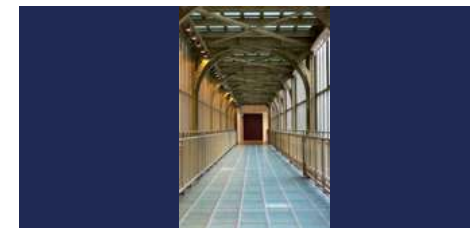
## DIS

Ensures smooth video by gently zooming the image when the camera is subject to vibration.



## ROI

Concentration of the resolution on an area of interest for face recognition by optimizing the bandwidth.



## Corridor mode

90° electronic image rotation to view a larger area in a hallway.



## IP66

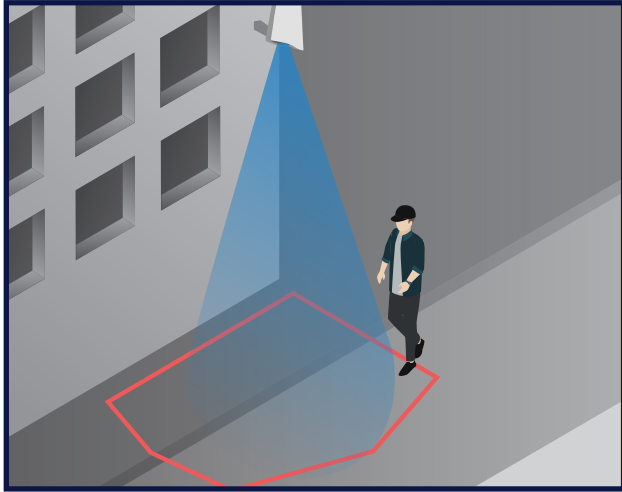
Fully protected against dust, protected against water jets from all directions



## IK10

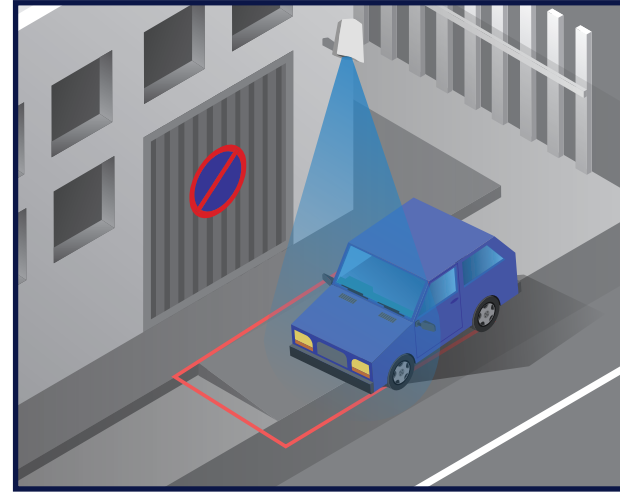
Fully protected against an impact of 20 joules.

# Smart analysis



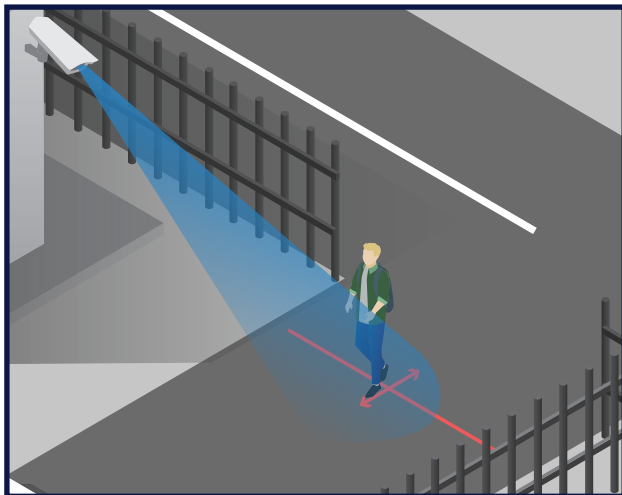
## People detection

If someone enter this area, I am warned!



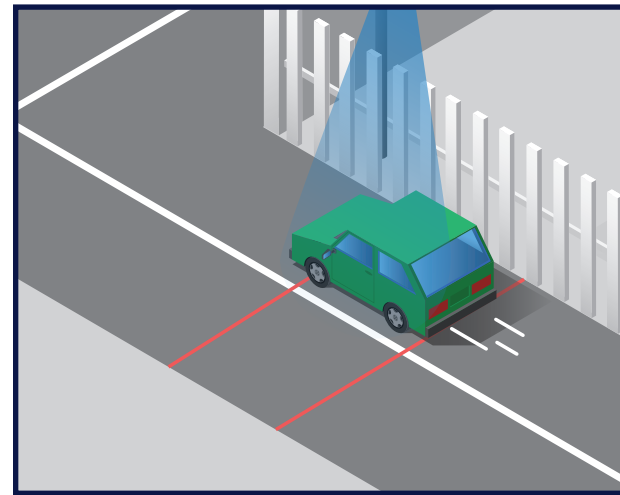
## Illegal parking

If a vehicle parks in this area, I am warned!



## Fence

If a vehicle or someone passes this entrance in the direction of the red arrows, I am warned!



## Double fence

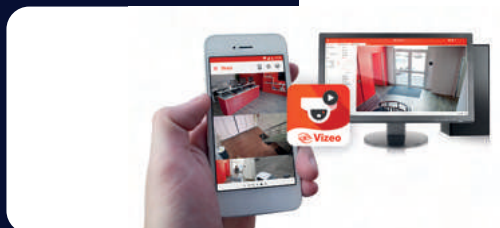
If a vehicle or someone passes these two bands, I am warned!

But also **add object** or **missing object**, **bad signal**, **motion detection** and **network disconnection**.

# The tools



**Alert in case of intrusion**



**MyVizeo**

An application to remotely view your cameras



**Vizeo DDNS**

Creation of an address accessible from the internet