

Outdoor Camera

CA50HDj



2.7 mm Focal length

H

87.5°

V

64.8°

Up to
6 meters*



Identification

Up to
10 meters*



License plate reading

Up to
12 meters*



Recognition

*Daytime distance

13.5 mm Focal length H

26°

V

19.9°

Up to
27 meters*



Identification

Up to
45 meters*



License plate reading

Up to
54 meters*



Recognition

*Daytime distance

Technical Data Sheet

Sensor	1/3" CMOS.
Resolution	2592x1944 pixels, 5M, 25/30 IPS.
Focal lenght	Motorized lens from 2.7 mm to 13.5 mm.
Sensitivity	87° to 26°.
Infrared range	0.05 Lux (Color), 0 Lux with IR.
Intelligence**	Effective range of 40 meters. Person detection, perimeter, single or double line crossing.
Images*	3D DNR, WDR, ICR, HLC, ROI, DIS, Anti-fog, corridor mode.
Video compression	H.264, H.265, MJPEG.
Video stram	100kbps à 12Mbps.
Protocols	IPv4/IPv6, 802.1x, HTTP, HTTPS, TCP/IP, UDP/IP, DHCP, NTP, RTCP/RTP, PPPoE, SMTP, DNS, UPnP, FTP, ARP, SNMP, Vizeo.
Compatibility	RTSP - ONVIF.
Specificity	SD card slot up to 256 GB (card not included).

Positioning	3 axes.
Motorization	Motorized lens.
Power supply and consumption	12V DC, PoE and 7 W max.
Dimensions and weight	232mm x 80mm x 80 mm et 0.81 kg.
Operating temperatures	-40°C to 55°C avec 90% non-condensing humidity.
Protection rating	IP67.
Warranty	2 years.

Recommended accessory



SP50HD

connecting box

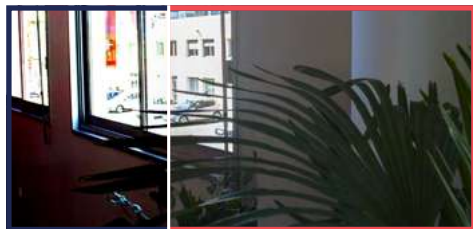
* See page 3 | ** See page 4

Technical glossary

Camera performances

without

with



WDR (Wide Dynamic Range)

Avoids backlighting and loss of details in shadow areas.



ICR (Infrared Cut Filter)

A mechanical filter that allows faithful reproduction of color in recorded images during the day.



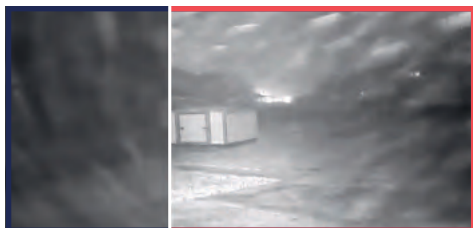
3D DNR (3D Digital Noise Reduction)

Reduces noise (randomly occurring pixel colors) in dark areas for improved image quality.



HLC (Highlight Compensation)

Reduces strong lights and backlighting to prevent camera glare.



Anti-fog

Enhances visibility in adverse weather conditions such as fog, snow, rain, etc.



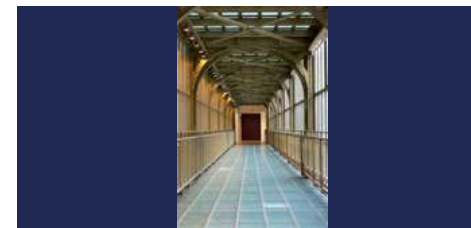
DIS (Digital Image Stabilization)

Ensures smooth video by slightly zooming in on the image when the camera experiences vibrations.



ROI (Region of Interest)

Concentrates resolution on an area of interest for face recognition while optimizing bandwidth.



Corridor Mode

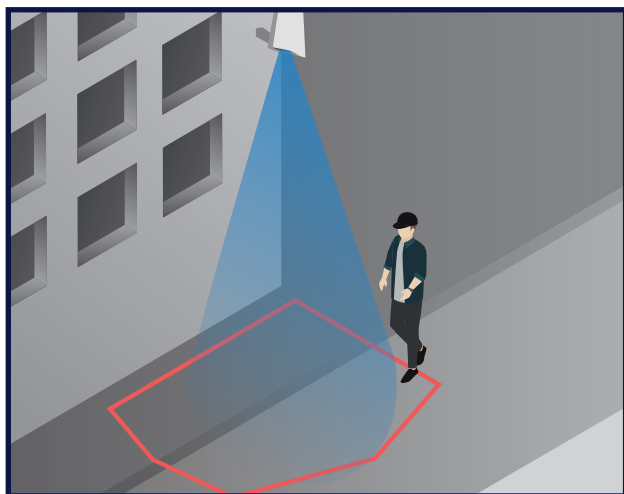
Electronically rotates the image by 90° to view a larger area in a corridor.



IP67

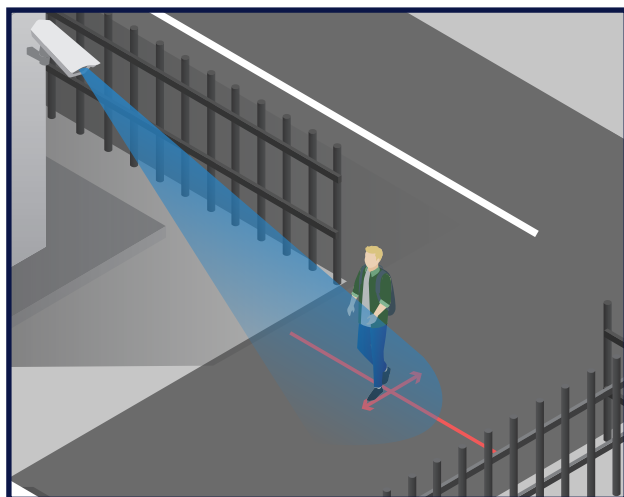
Completely protected against dust, safe immersion in water up to 1 meter for up to 30 minutes.

Intelligent analysis



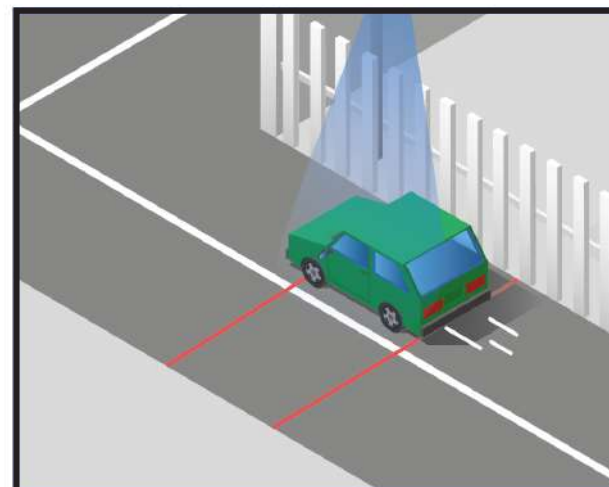
Person detection

If a person enters this area, I am notified !



barrier

If a vehicle or someone passes through this entrance in the direction of the yellow arrows, I am alerted!



Double barrier

If a vehicle or someone passes through these two strips, I am alerted.

Optimal operation during the day. At night, there is a risk of false positives.

The tools



MyVizeo 2.0

Free application available on Apple and Android. Monitor your cameras live, access playback at any time, and receive instant alerts in case of motion detection. With Scan2Connect*, connecting to your cameras takes only 30 seconds.



MyVizeo 1.8

Free application available on PC and MAC. Monitor your cameras live, access playback at any time, and easily access all the features of your recorder. Also compatible with Scan2Connect*.



MyVizeo.fr

Access your cameras from a web browser.

Myvizeo.fr allows you to access your cameras anytime and anywhere in the world from a simple web browser (e.g., Chrome, Edge, or Firefox). Compatible from HD5XX E recorders onwards.*

* Vizeo tools available to you for free