

Outdoor Camera

# CA40HDa



Focal length 2.8 mm

93°

Up to  
6.1 meters\*

  
**Identification**

Up to  
10 meters\*

  
**Plate reading**

Up to  
13 meters\*

  
**Recognition**

\*Daytime distances

# Data sheet

<b>Sensor</b>	1/2.8" CMOS
<b>Resolution</b>	2688 x 1520 pixels - 25/30 IPS
<b>Focal lenght</b>	2.8 mm
<b>Angle</b>	93°
<b>Sensibility range</b>	0,05 Lux (Color), 0 Lux (B&W)
<b>Infrared range (by night)</b>	30 meters Smart infrared
<b>Intelligence **</b>	People detection, perimeter, single or double line crossing, lurker or multiple lurker, face recognition, person, vehicle, bad signal, motion detection, network disconnection
<b>Images *</b>	3D DNR, WDR, ICR, HLC, ROI, DIS, Fog lamps, Corridor mode
<b>Video Compression</b>	H.264, H.265, MJPEG
<b>Video flow</b>	100kbps à 12Mbps
<b>Protocols</b>	IPv4/IPv6, 802.1x, HTTP, HTTPS, TCP/IP, UDP/IP, DHCP, NTP, RTCP/RTP, PPPoE, SMTP, DNS, UPnP, FTP, ARP, SNMP, Vizeo
<b>Compatibility</b>	RTSP - ONVIF

<b>Positioning</b>	3 axis
<b>Power supply and consumption</b>	12V DC, PoE et 8.5 W Max.
<b>Dimensions and weight</b>	187.6 mm x 64 mm x 64 mm et 550 g
<b>Operating temperature</b>	-40 °C to 55 °C
<b>Protection sign *</b>	IP67
<b>Guarantee</b>	3 years
<b>Specificite</b>	Easy to assemble SD card slot (max 256GB not included)

## Recommened accessory



**SP50HD**  
Junction box

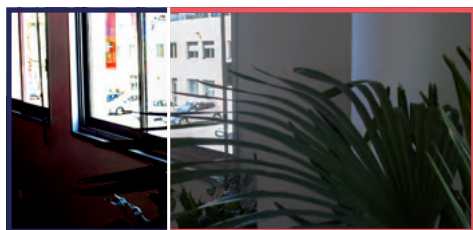
\*\* See page 3 | \* See page 4

Technical glossary

# Camera performance

without

with



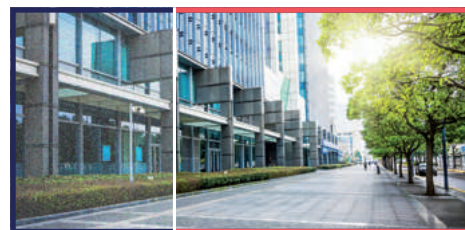
## WDR

Avoid backlighting and loss of detail in shadow areas.



## ICR

Mechanical filter that allows, during the day, a faithful reproduction of the colorimetry of the filmed images.



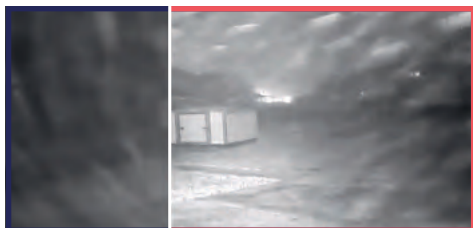
## 3D DNR

Noise reduction (spurious color dots) in dark areas for better image quality.



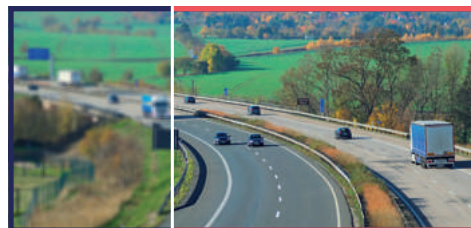
## HLC

Reduces bright lights and backlighting to avoid camera glare.



## Anti-fog

Better visibility in bad weather: fog, snow, rain...



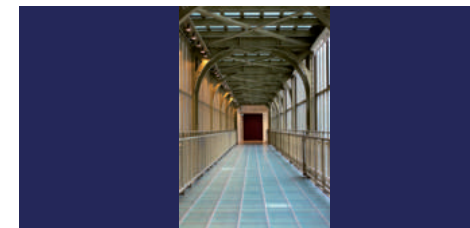
## DIS

Ensures smooth video by gently zooming the image when the camera is subject to vibration.



## ROI

Concentration of the resolution on an area of interest for face recognition by optimizing the bandwidth.



## Corridor mode

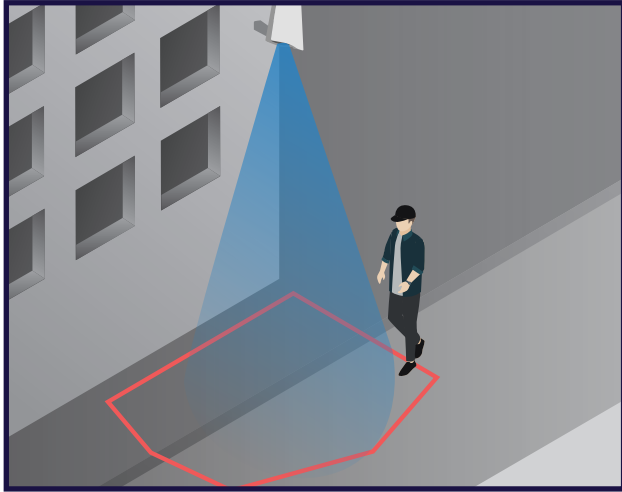
90° electronic image rotation to view a larger area in a hallway.



## IP67

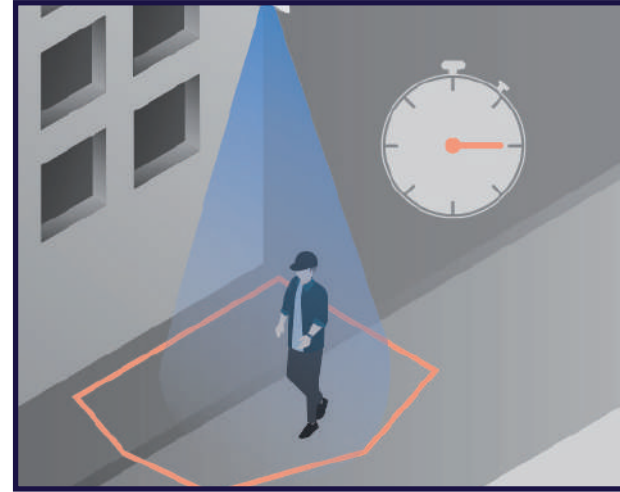
Fully protected against dust, protected against strong water jets.

# Smart analysis



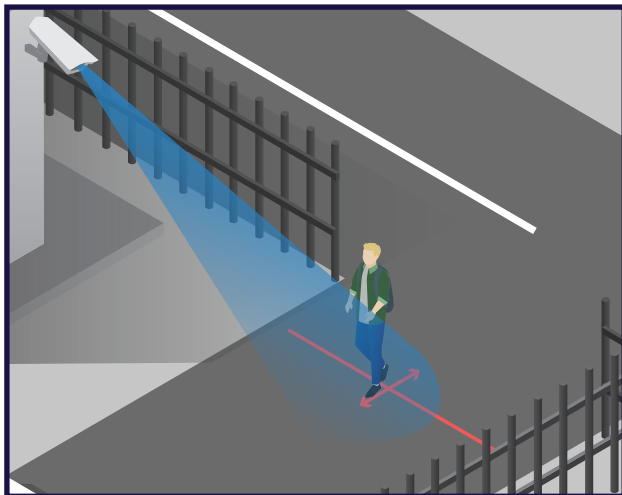
## People detection

If someone enter this area, I am warned!



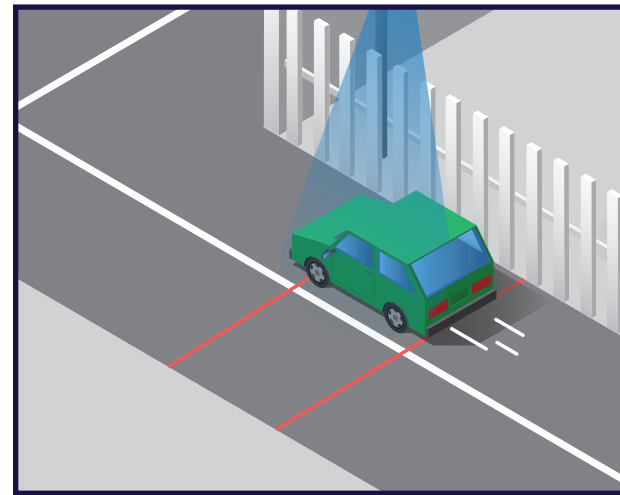
## Lurker

If a person stays in this area long enough, I am warned!



## Fence

If a vehicle or someone passes this entrance in the direction of the red arrows, I am warned!



## Double fence

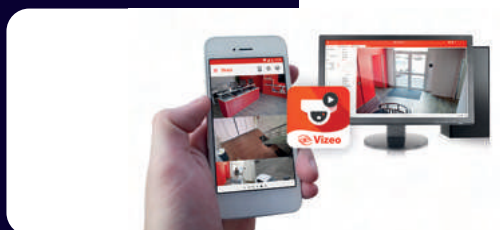
If a vehicle or someone passes these two bands, I am warned!

And also **add object** or **missing object**, **bad signal**, **motion detection** and **network disconnection**.

# The tools



**Mail alert in case of intrusion**



**MyVizeo**

An application to remotely view your cameras



**Vizeo DDNS**

Creation of an address accessible from the Internet